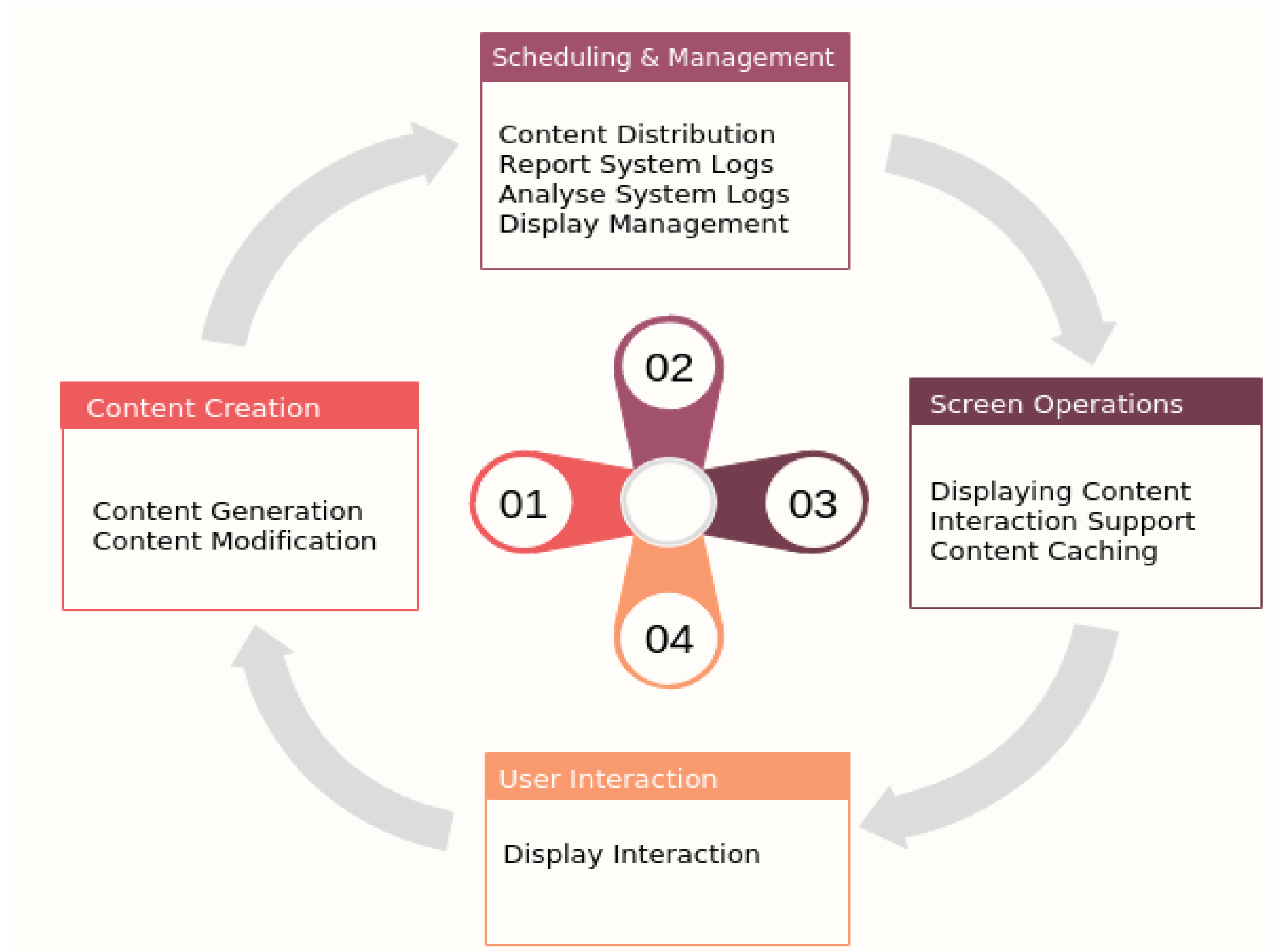
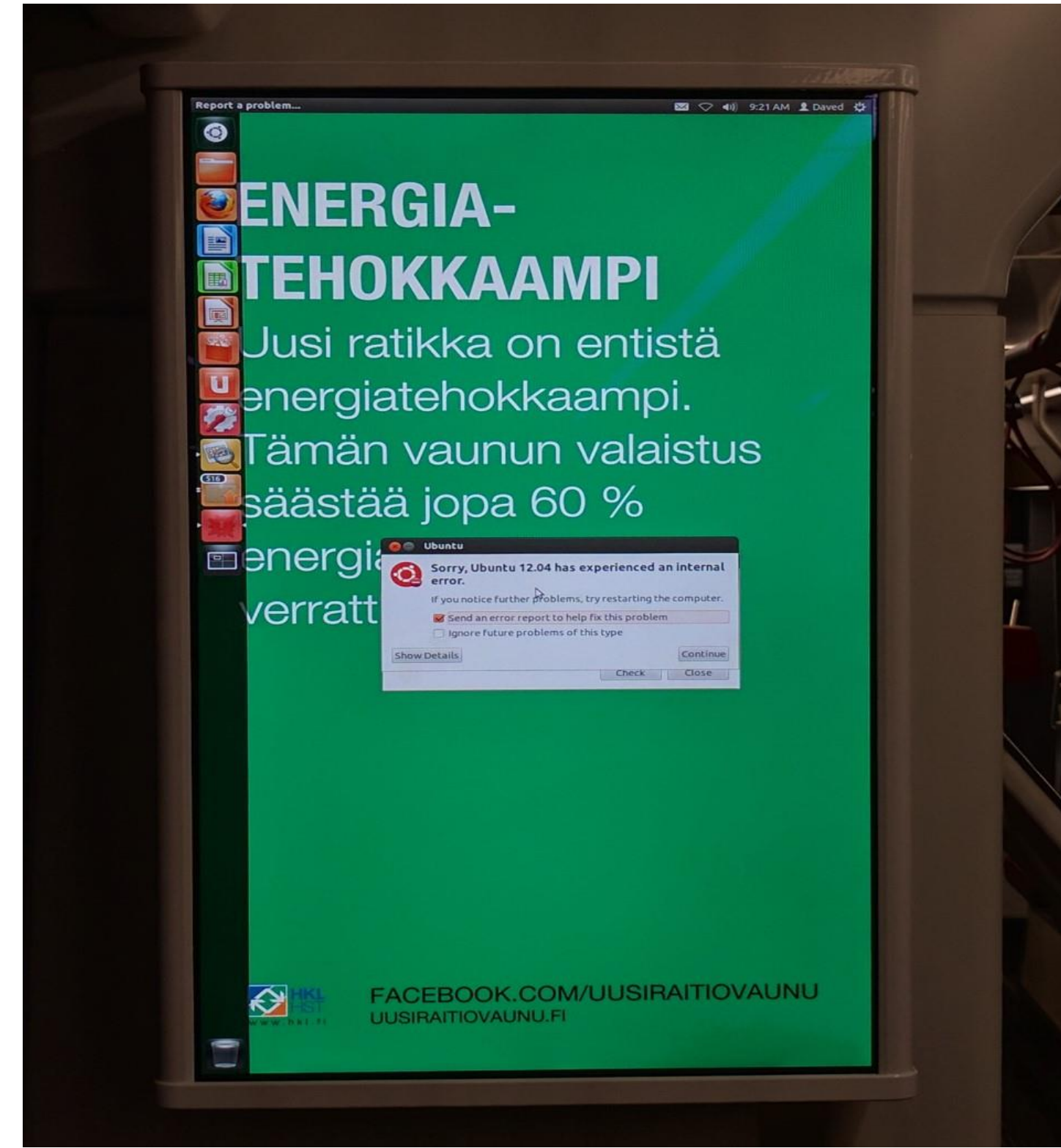


Remote Monitoring and Failure Recovery of Cloud-Managed Digital Signage

Digital Signage System



Failures

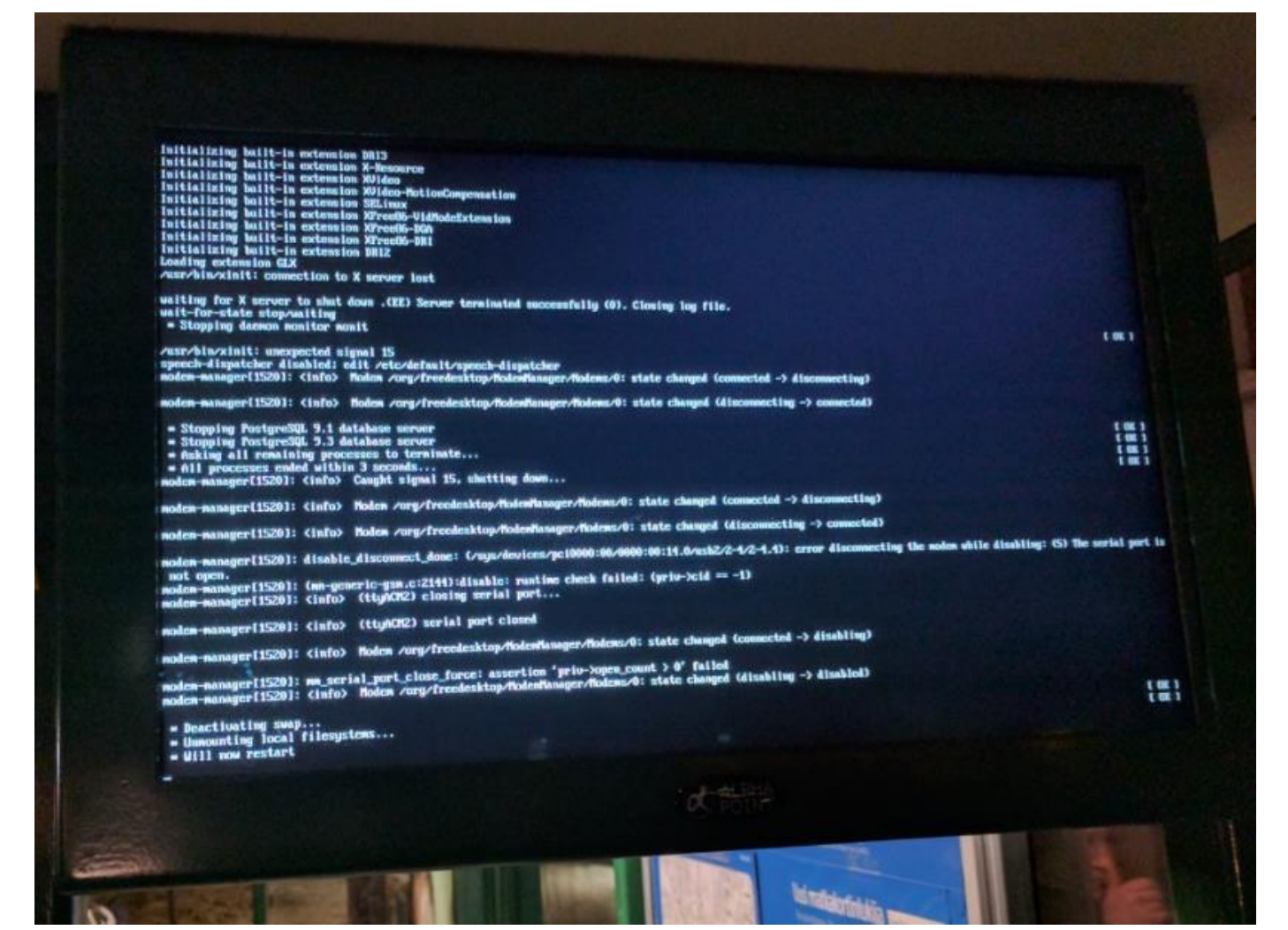


Software failures

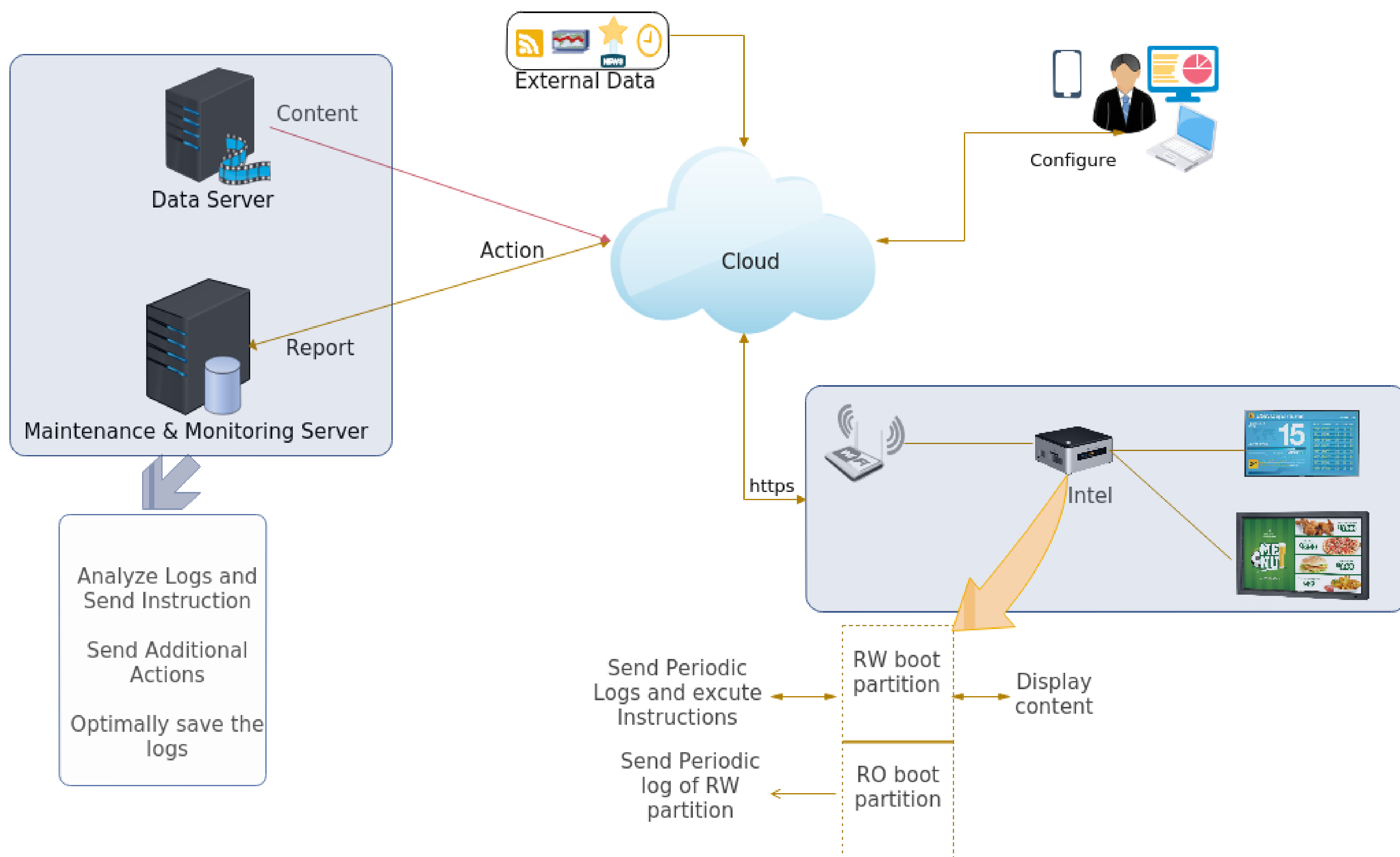
- Screen Freeze
- Blank Screen
- Unwanted Popups
- Application Crashes
- Sound Problems

Hardware failures

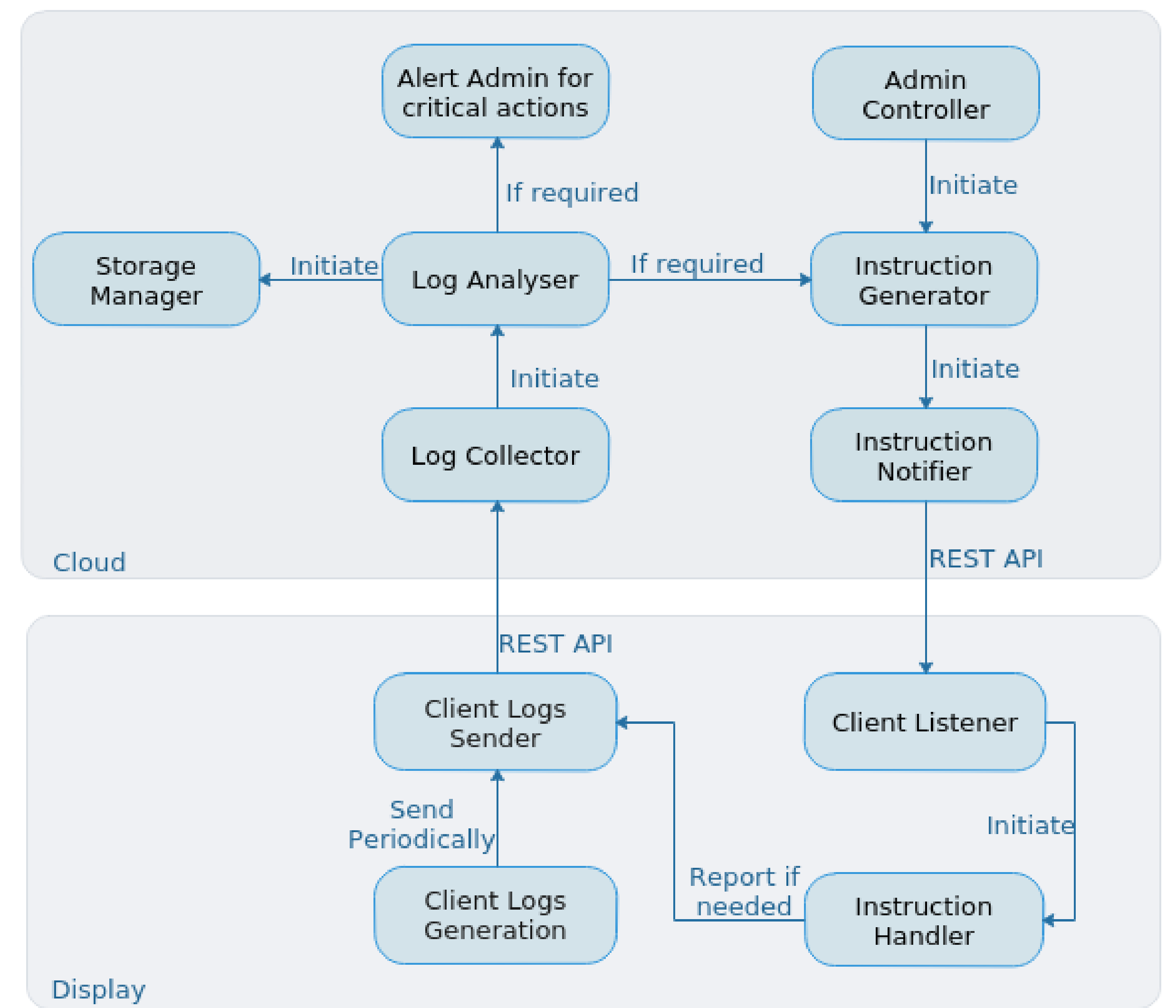
- Cable Disconnected
- Access Point Down
- Power Off
- Storage Failure
- Human Errors



Proposed Architecture



Monitoring System



Management Module Role

- Remote monitoring: Check heartbeat and screenshots
- Remote management: Configuration and repair
- Remote diagnostics: Run automated scripts and generate reports

Our Goals

